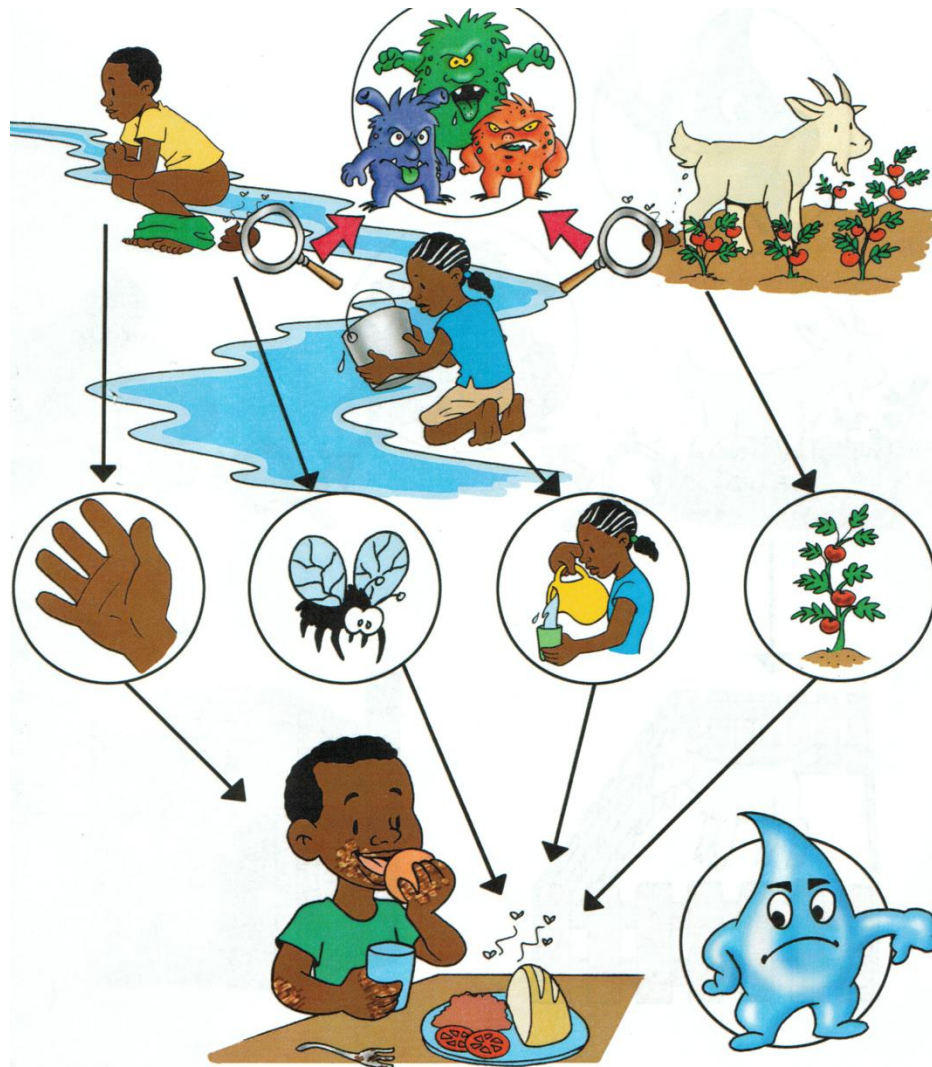


Kisa Kolera Ye?

Kolera se yon maladi trè kontajyez li fè w' pèdi tout dlo nan kò w' ou jwenn li nan dlo ki pa trete





MIKRÒB YO SOTI NAN POUPOU

Koman pou Nou Pa Pran Cholera?

DLO TRETE:

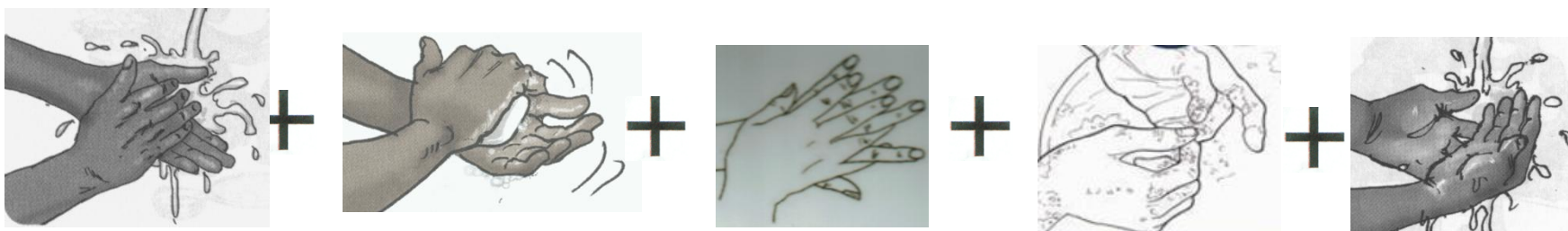
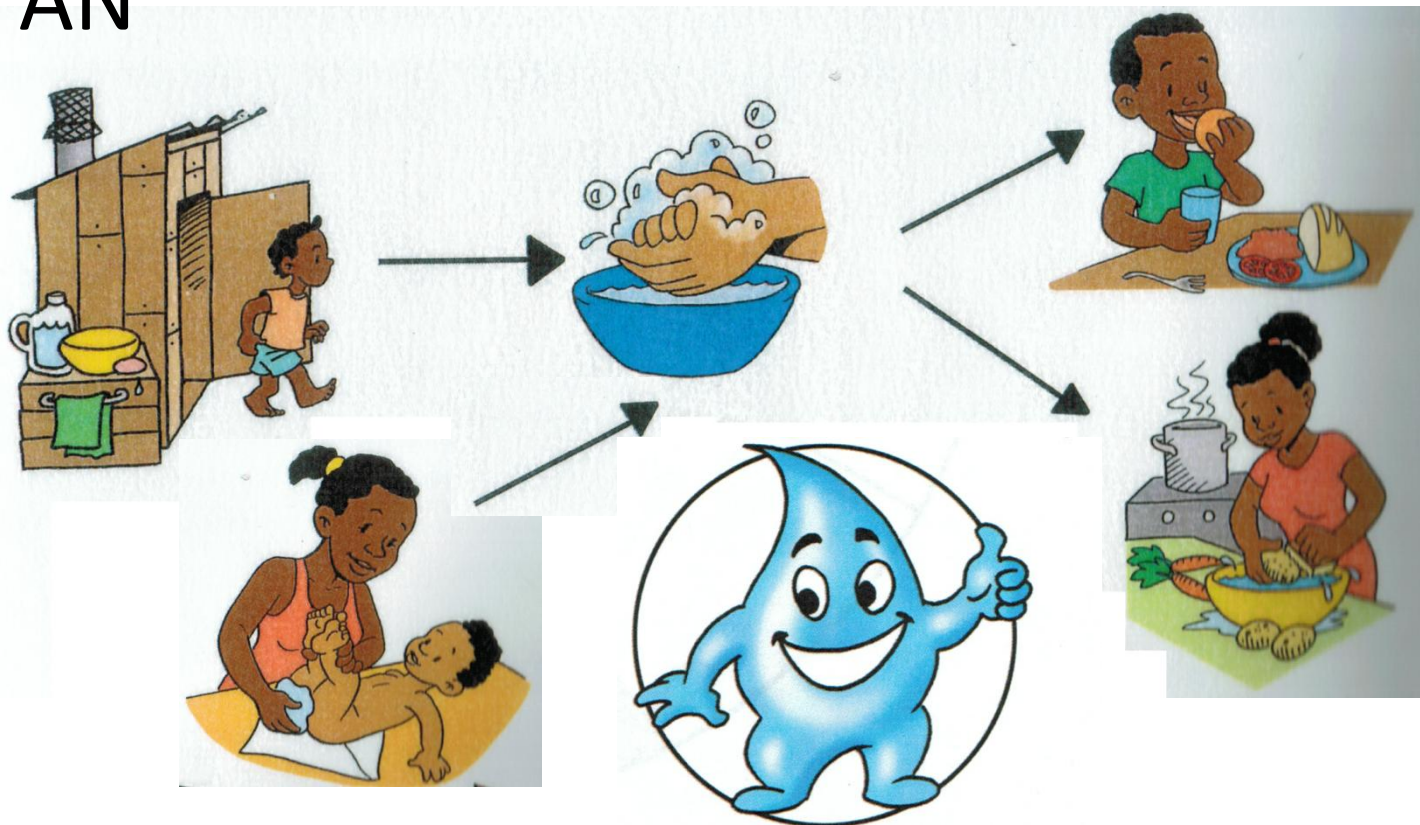
Dlo n' ap sèvi dwe
toujou trete!

- Pou lave tout veso ak manje
- Pou lave men
- Pou bwe



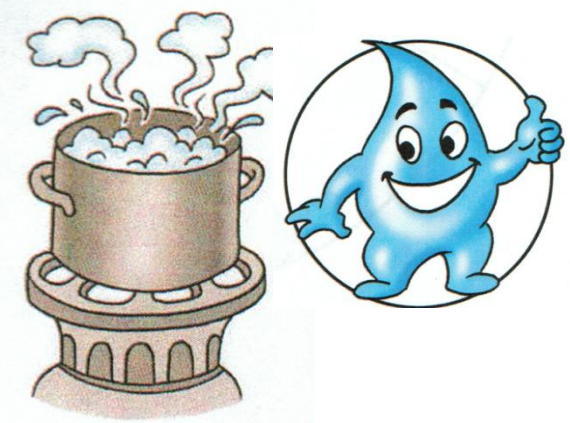
LAVE MEN AVEK SAVON PLIZYE FWA NAN JOUNEN AN

KI LÈ?



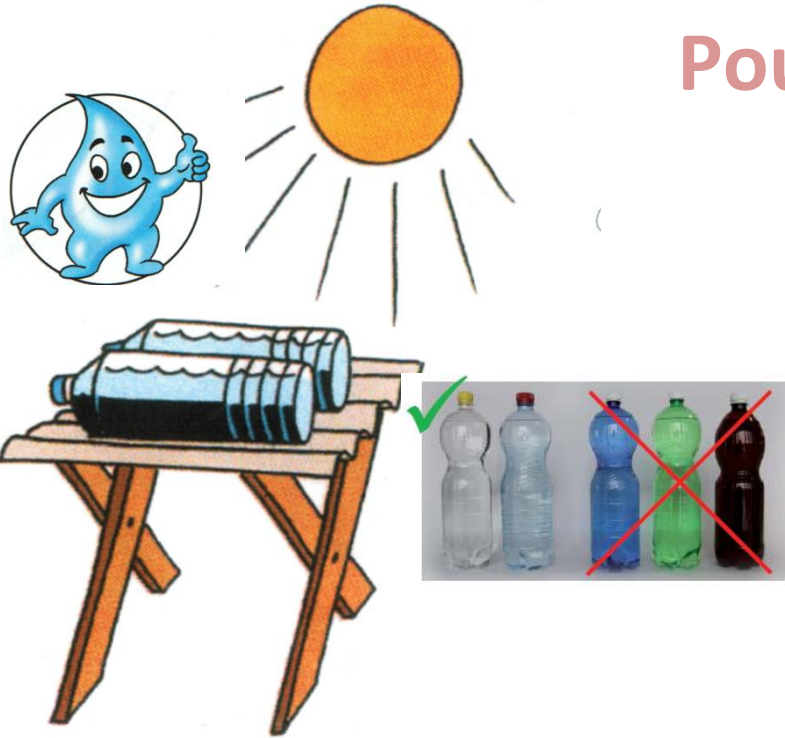
Kijan nou ka trete dlo a?

- Pou bwe e bwose dan:
- Kite dlo a bouyi pandan 5 minit

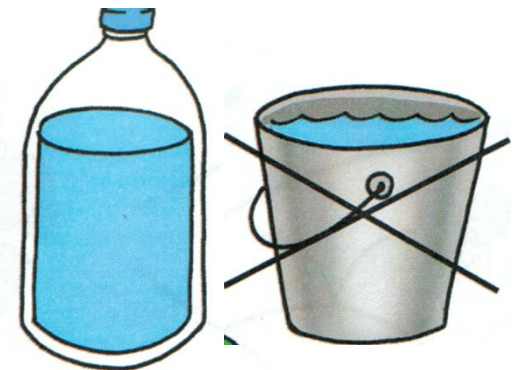


Pou lave men e tout bagay:

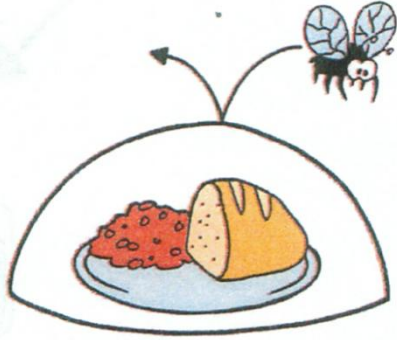
- Mete dlo a nan yon boutey plastik transparan
- Kitel pose nan soley pandan yon jounen



**KENBE DLO PWOP OU NAN BON
KONDISYON**

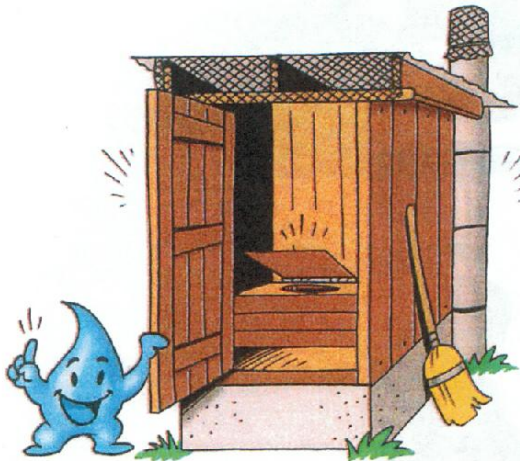


MANJE:



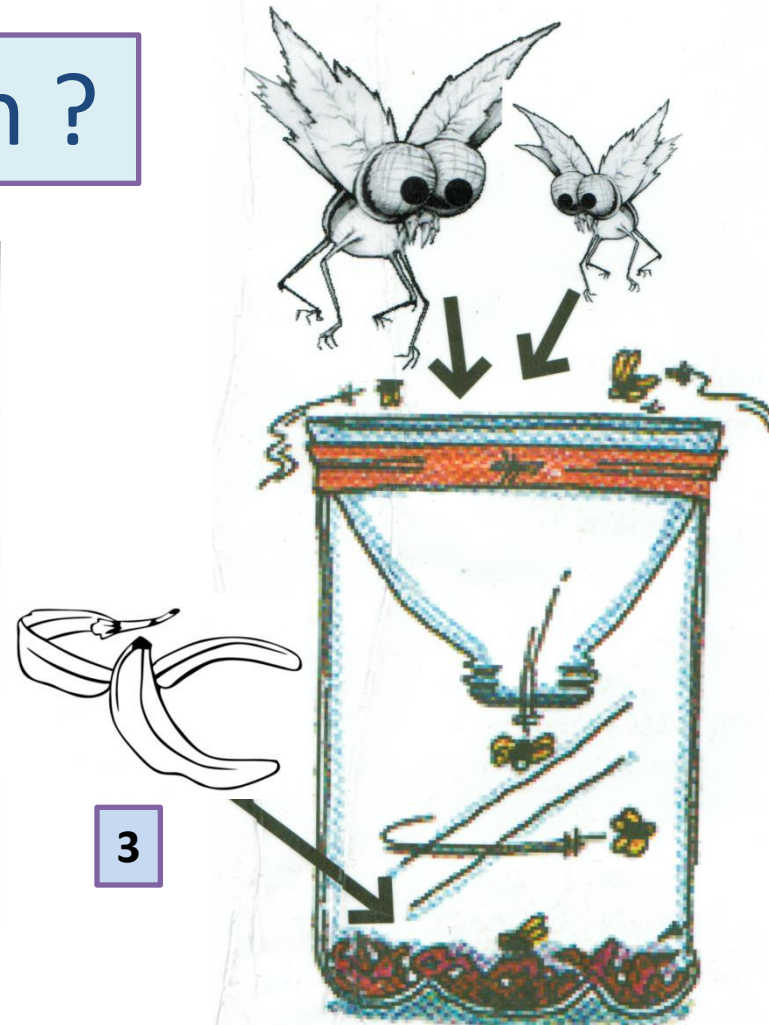
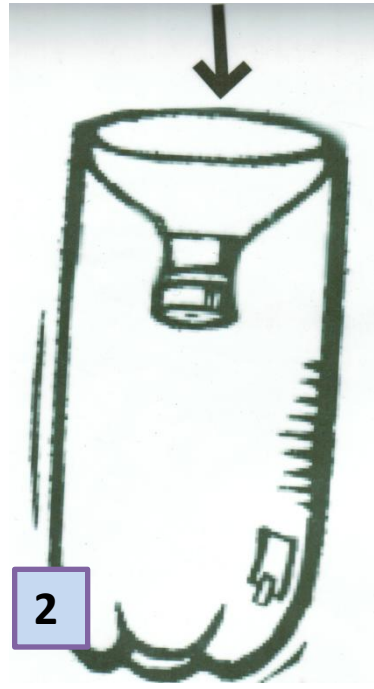
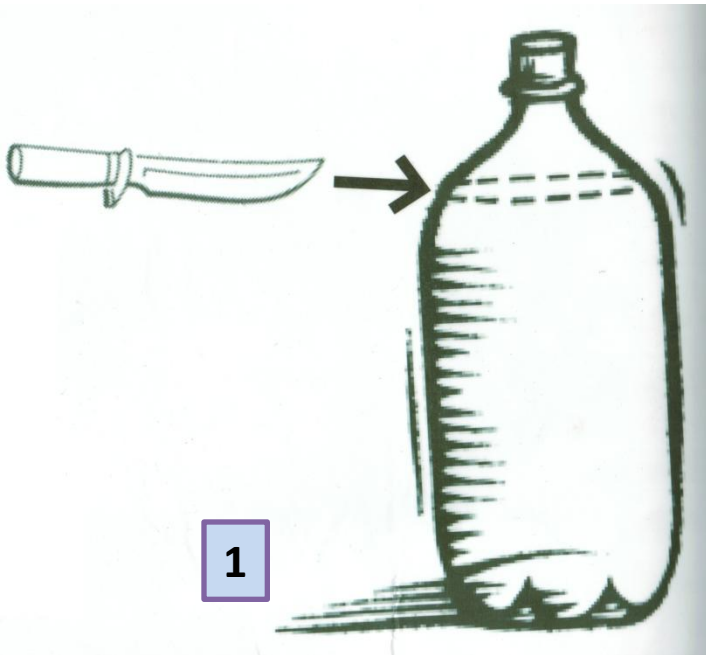
- Vyann ak legim yo dwe byen kwit
- Lave tout veso,tout fwi,tout manje yo avèk dlo trete
- Toujou kouvri manje yo pou pwoteje yo kont mouch

TWALET :



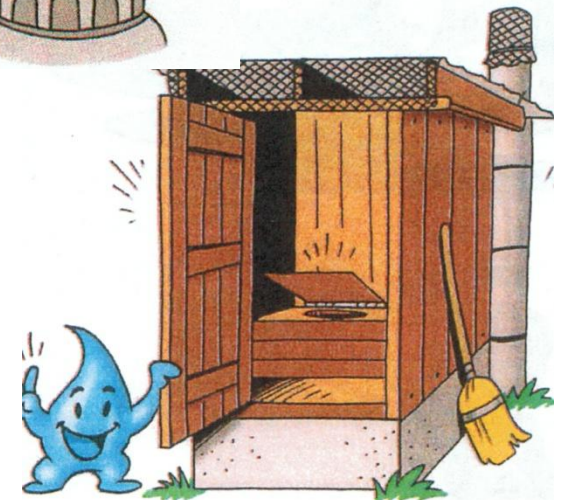
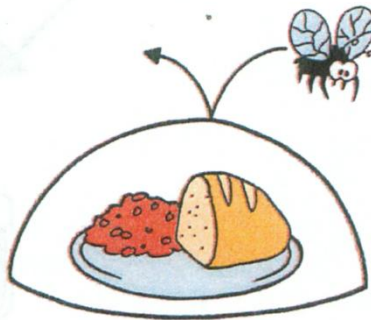
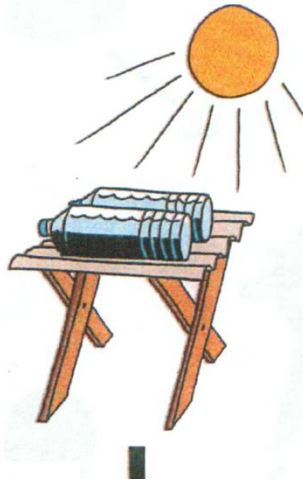
- Toujou fè bezwen nou nan latrin, pa fè bezwen nou atè
- Mete poupou timoun yo ak vomisman nan latrin

Kijan fabrike atrap mouch ?



✓ Mete atrap mouch proch twalet ak kote ou fe manje pou evite mouch pwopaje kolera

ESTOPE MIKRÒB PROTEJE TÈT OU



KÒMAN NOU KA TRETE KOLERA?

SENTOM

- Dyare likid en trè gran kantite
 - San odè
 - Tankou dlo diri
- Vomisman
- Vant fè mal



**Si Dyare Tankou dlo diri vini
Fòk Ale Nan Lopital tout swit**

Nan wout la Komanse Bwe Serum Oral
Lopital Pi Proch:

Kijan pou nou fe sewom lakay ?

– Pou yon galon dlo trete



- Demi kiyé  sél

- 6 kiyé sik



- Si gen, Pije 1 bò citron ladan 'l
oswa demi tas dlo kokoye

- Byen Melanje 'l