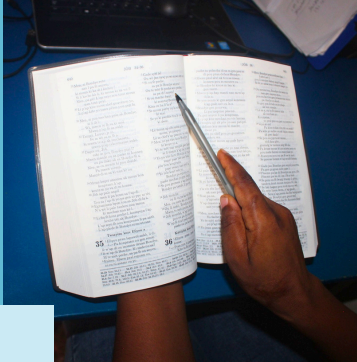




REAL HOPE FOR HAITI

April
2026

MISSION: TO DELIVER HOPE FOR THIS LIFE AND THE LIFE TO COME THROUGH COMPASSIONATE MEDICAL CARE, QUALITY HEALTH EDUCATION, INTENSIVE MALNUTRITION INTERVENTIONS, ACTIVE COMMUNITY DEVELOPMENT, AND GOSPEL FOCUSED OUTREACH, ALL IN THE LOVE AND NAME OF JESUS.



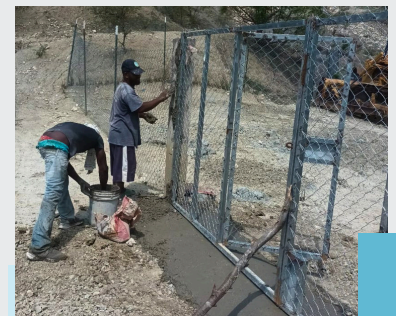
Bettie brought her sick son to our clinic for nutrition care. Week after week, as she waited for his appointments, our chaplains shared the Gospel with her. The messages touched her deeply, renewing her faith and drawing her closer to Jesus. She made the decision to give her life to God. She came seeking healing for her son. She left with healing for her own soul. This is what your support makes possible. Because of your generosity, our chaplains can be here, sharing hope and transforming lives. Thank you for making room for God to work.

This past month, we created compost areas at the community group (the 4th location for RHFH). We're using waste like cardboard, vegetable scraps, and paper to make nutrient-rich compost for our tree nursery. This compost provides vitamins and healthy soil to help trees grow strong, all while reusing materials we would normally throw away. It's a win-win for our plants and our environment.



A one-room house and kitchen were built to house a caregiver for the tree nursery and property. He moved in earlier this year and has become essential to our work. He waters the trees and plants, weeds the nursery, maintains the fence, and keeps the yard clean and safe. He also helps with any projects the group has. Having a dedicated caregiver on-site has been a big help in our progress toward our goals.

Since 2003, the GVADK community group has been working to improve our area. This year, we are concentrating on our tree and plant nursery for food production and reforestation. To protect young plants from wandering animals, we repaired our fence and sealed gaps. We then purchased new materials and had a sturdy gate custom-made. This past month, we installed the gate. Now our plants and tools are secure for years to come.



VISION: Physically, relationally, and spiritually healthy people contributing to thriving families and strong communities as God designed and desires.

Six-month-old Gilson lives in Lacoupe, a remote area far from our nutrition center. When his family brought him to us, he was severely malnourished, suffering from oral thrush that prevented him from breastfeeding, a fever that had lasted eight days, and anemia. His tiny body was fighting multiple battles at once. Our medical team immediately conducted laboratory tests and established a treatment plan. Gilson received ceftriaxone, azithromycin, vitamin A, and specialized therapeutic milk designed for severely malnourished infants. Day by day, with dedicated care and proper nutrition, Gilson improved. The thrush disappeared. The fever broke. His strength returned. Today, he is healthy and breastfeeding normally. He's home with his family, thriving. Thanks to our generous donors, babies like Gilson have a fighting chance. Your support makes these life-saving treatments possible. Thank you for giving hope to the most vulnerable.



Three-and-a-half-year-old Shama lives in Courtanceau with her mother, uncle, and aunt in a small house made of blocks and metal sheets. Her mother sells cosmetic products to support the family. When Shama arrived at our clinic, she was severely underweight and suffering from malnutrition, flu, and colic. Our medical team provided treatment and enrolled her in the nutrition program. At her follow-up appointment, the change was remarkable. Shama was healthy again, gaining nearly four pounds, from 26.5 to 30.4 pounds. Her mother is deeply grateful to our donors for restoring her daughter's health and bringing hope to their family.

The nursery is thriving with 1,040 reforestation trees and 594 vetiver plants ready for erosion control planting when the rains begin. We've also started 50 fruit trees, with a goal of 300 for 2026, and 358 pepper plants to increase food production. These plants represent our commitment to sustainable agriculture and environmental protection for our community.

